



TIRE CHANGING TOOLS & ACCESSORIES

Catalogue



Tire Mount and Demount
Systems



Tire Bars, Irons and Spoons



Bead Seating Tools



Bead Breaking Tools



Bead Hammers, Mallets and
Wedges

Tire and Wheel Service Solutions

Prema Canada is one of the largest distributors of tire and wheel service supplies and is a market leader in delivering a total supply solution to the tire industry in Canada. Founded in 1954 as Loomis Root Canada Ltd, the company has evolved from a small, regional automotive and retread supply distributor into a focused network of independent tire and wheel service supply Distributors servicing the entire country from coast to coast.

www.premacanada.ca

Wherever You Are Coast to Coast



ALBERTA 8

Northern 2
Edmonton 2
Central 2
Calgary 1
Southern Alberta 1

ONTARIO 17

North Western 1
North Eastern 1
South Western 3
Central 8
Eastern 4

QUEBEC 6

Northern 1
Gatineau 1
Montreal 1
Southshore 1
Quebec City 2

SASKATCHEWAN 4

Northern 2
Southern 2

BRITISH COLUMBIA 11

Northern 3
Vancouver Island 2
Lower Mainland 2
Interior 4

ATLANTIC CANADA 5

New Brunswick 1
Nova Scotia and PEI 2
Newfoundland 2

MANITOBA 4

West 1
East 3

TABLE OF CONTENTS

	<i>Page</i>
4210 — Tire Mount and Demount Systems	42-2
4220 — Tire Bars, Irons and Spoons	42-3
4230 — Bead Seating Tools	42-8
4240 — Bead Breaking Tools	42-10
4250 — Bead Hammers, Mallets and Wedges	42-16

PREMA

**Tire and Wheel
Service Solutions**

4210-10 — 1-Piece Demount Systems



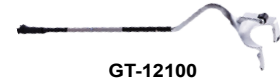
AME-71025



AME-71051



AME-71052



GT-12100



T2001



T2002



TNT-100-1



TNT-200-M



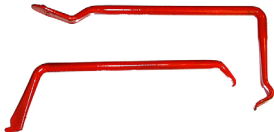
AME-11002



AME-12105

Code	Description
AME-11002	Aluminum Mini Bead Breaker • Works for Breaking Truck and Tractor Tire Beads Where Space is at a Minimum • Lightweight • Easily Fits Between Dual Tires
AME-12105	Dual 11000 Giant OTR Tire Bead Breaker Kit • Twice the Bead Breaking Power on Stubborn OTR Wheel Assemblies • Recommended for Use on 5 Piece Wheel Assemblies Up to 49" • 5 Quart Pump Provides Enough Oil Capacity for Both Bead Breakers • Includes (2) AME-11000 OTR Bead Breakers, (1) AME-15920 Five Quart A / H Pump, (2) AME-16040 8' Hydraulic Hoses With Couplings, (1) AME-16100 8' Hydraulic Hose Without Couplings and (1) AME-16165 Hydraulic Manifold Kit With Proper Couplings
AME-71025	AME Impact Driven Truck Tire Demounter • Ranges From 10" ATV Tires, All Commercial Truck Tires and All Agricultural Tires • Fastest Way to Demount 19.5" Reverse Hub Truck Tires • Can Be Used With Any 1/2" Impact • Won't Damage Chrome Wheels
AME-71051	AME Truck Tire Demount Tool • Demount Tool Portion of AME-71050 Truck Tire Mount / Demount System
AME-71052	AME Truck Tire Mounting Tool • Mount Tool Portion of AME-71050 Truck Tire Mount / Demount System
GT-12100	Gaither Truck Tire Demounting Tool
T2001	Ken-Tool Serpent Demount Tool • Demounts Both Beads of Most Truck Tires Without the Need for Lifting the Tire / Wheel Assembly Off the Ground • Heat-Treated Alloy Steel is Both Durable and Strong • Length 39" • 3/4" Thick Steel
T2002	Ken-Tool Serpent Mount Tool • Wing Shape is Designed to Stop Against the Rim and Remove Itself Effortlessly From Between the Rim and Bead • Heat-Treated Alloy Steel is Both Durable and Strong • Length 38" • 11/16" Thick Steel
TNT-100-1	TNT Demount Tool Only • Demounts Truck Tires With Ease • Does Not Damage Beads
TNT-200-M	TNT Mounting Tool Only for the TNT-100 and TNT-200 Systems • Mounts Truck Tires With Ease • Does Not Damage Beads

4210-15 — Multi-Piece Demount Systems



32129



AME-71000



AME-71050



GT-J1

Code	Description
32129	Forklift Lock Ring Tire Iron Set • Includes: 32130 Forklift Lock Ring Mount / Demount Iron and 32131 Forklift Lock Ring Demount Prep Tool
AME-71000	AME Easy Buddy Tire Mount / Demount Tool • Mount Tool Assembly for 22.5" and 24.5" Tires / Wheels • Demount Assembly for 22.5" and 24.5" Tires / Wheels • Bead Keeper • Heavy Duty Steel Construction Ensures Long Life • Nylon Rollers Protect the Tire Bead
AME-71050	AME Mount / Demount Truck Tire Removal System • Tool Set Includes: AME-71051 Demount Tool, AME-71052 Mount Tool and AME-71053 Metal Bead Holder
GT-J1	Gaither 2 Piece Mount / Demount Tool System for All 19.5", 22.5" and 24.5" Tubeless Tires up to and Including 315/80R22.5 • Mounting and Demounting are Done With the Tire Flat on the Ground • Consists of (1) GT-J1B Bar and (1) GT-12902 Clevis

4210-20 — Manual Tire Changers

Code	Description
CH4	Mongoose Tire Changing Tool • The "Mount-End" Has a Flat Surface to Keep the Tool From Turning While Mounting the Tire • The "Demount-End" is Round to Allow Smooth Motion When Dismounting Any Tire
CH22	TSI Manual Tire Changer With CH4 Mongoose Tire Tool Accommodates Most Wheels Including Open Hub and Bearing Wheels • Easy, Fast and Economical • Everything You Need to Change Small Tires
CH23	TSI Stand for CH22 With Built-In Bead Breaker • Includes a Leverage Bar for the Bead Breaking Attachment • Convenient Storage Areas



4210-22 — Manual Tire Changers — Accessories

Code	Description
31810	Leather Wheel Protector • Prevents Tire Tools From Marring or Scratching Aluminum Rims • 2 Clip Feature — When One Side Wears Out Just Flip and Use the Other Side
2-RPT	Alloy Rim Protection Tool



4220 — Tire Bars, Irons and Spoons

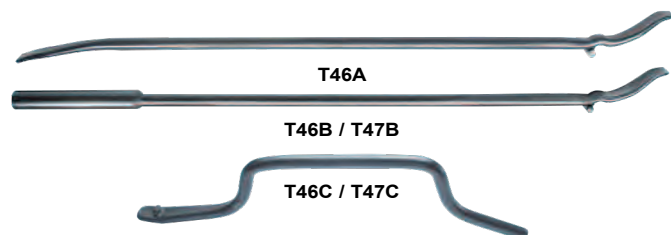
4220-10 — Mount and Demount Bars *(cont'd on following page)*

Ken-Tool One-Piece Manufacturing Process and Design Assures Long Life and Superior Performance • Heat-Treated for Strength • Use in Pairs • Tip Ends Insert Easily and Will Not Cut or Rip Bead or Sidewall



Code	Description	Length	Dia.	Weight
T45A	Standard Tubeless Tire Mount / Demount Iron for Truck, Agricultural and Industrial Tires	37"	3/4"	4.6 Lbs
T45AC	Classic Tubeless Tire Mount / Demount Iron for Truck, Agricultural and Industrial Tires	37"	3/4"	4.6 Lbs
T45AS	Super Duty Truck Tire Iron	52"	7/8"	9 Lbs
T45HD	Heavy Duty Tubeless Tire Mount / Demount Iron for Truck, Agricultural and Industrial Tires	41"	7/8"	7 Lbs
T47A	Heavy Duty Straight Tubeless Mount / Demount Iron • Use on Standard and Large Truck Tires, Including Industrial, Farm, Buses and Tractors	52"	1"	11 Lbs

4220-10 — Mount and Demount Bars *(cont'd from previous page)*



Tubeless Tire Irons • Use "C" Bar With the "B" Extension Bar for Easier Use on Large, Wide-Base Truck Tires • For Use on Standard and Large Truck Tires, Including Industrial, Farm, Buses, and Tractors

TUBELESS TIRE IRONS

Code	Description	Length	Diameter	Weight
T46A	Straight Mount / Demount Tool • Use on Standard and Large Truck Tires, Including Industrial, Farm, Buses and Tractors	36"	3/4"	4.5 Lbs
T46B	Straight Mount / Demount Tool "B" Extension for T46C	36"	3/4"	4.5 Lbs
T46C	Offset Mount "C" Bar	22"	3/4"	3 Lbs
T47B	Heavy Duty Straight Mount / Demount Tool	49-1/2"	1"	11 Lbs
T47C	Heavy Duty Offset Mount / Demount Tool	27"	1"	6.6 Lbs



The T45A-2000K Design Allows for Less Effort, Provides Excellent Wheel / Rim Surface Contact Area for Less Side to Side Movement • Improved Blade and Knob Design • Tip on One End for Grabbing the Rim

T45A-2000K™ STYLE TUBELESS TIRE IRON

Code	Description	Length	Diameter	Weight
T45A-2000K	Redesigned Tubeless Tire Mount / Demount Iron	37"	3/4"	5 Lbs



T6A



T9A



T16A

Motorcycle / Small Tire Tool • Extended Length of the Flat Curved Sliding Surface Provides Mounting Ability Comparable to Longer Traditional Tire Irons

SMALL TIRE TOOLS

Code	Description	Length	Diameter	Weight
T6A	Small Tire Mount / Demount Tool • Tools are Used in Pairs to Mount or Demount Small Passenger, Industrial, ATV, and Motorcycle Tires	16-1/2"	5/8"	1.5 Lbs
T9A	Small Tire — Tire Iron • Pro Tire Changing Tool for Small Tires • Ideal for Mounting and Demounting Motorcycle, ATV, Lawn Tractor, Golf Cart, and Small Tires by Hand • Rounded Ends Will Not Pinch Tube	9"	7/16"	.4 Lbs
T16A		16"	7/16"	.7 Lbs

4220-12 — Spoons

Tire Mount / Demount Spoons are Designed for Fast and Efficient Tire Changing • Use the 18" and 24" Spoons to Mount or Demount Passenger Car, Motorcycle, ATV, and Light Truck Tires • The 30" Spoons Provide Enough Strength and Leverage to Work on Large Truck, Bus, Off-Road Vehicle, Tractor, and Aircraft Tires



STRAIGHT TIRE MOUNT / DEMOUNT SPOONS

Code	Description	Length	Diameter	Weight
T1X	Straight Tire Spoon	18"	11/16"	1.8 Lbs
T19	Straight Tire Spoon	24"	11/16"	2.5 Lbs
T19A	Straight Tire Spoon	30"	11/16"	3 Lbs
T38	Straight Tire Spoon	30"	7/8"	4.8 Lbs



CURVED TIRE MOUNT / DEMOUNT SPOONS

Code	Description	Length	Diameter	Weight
T2X	Curved Tire Spoon	18"	11/16"	1.8 Lbs
T20	Curved Tire Spoon	24"	11/16"	2.4 Lbs
T20A	Curved Tire Spoon	30"	11/16"	3.1 Lbs
T22M	Curved With Flat Tire Spoon	30"	3/4"	3.4 Lbs
T39	Curved Tire Spoon	30"	7/8"	4.5 Lbs



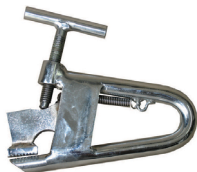
DROP CENTRE TIRE MOUNT / DEMOUNT SPOONS

Code	Description	Length	Diameter	Weight
T21F	Drop Centre Tire Spoon	24"	11/16"	2.5 Lbs
T21HD	Drop Centre Tire Spoon	30"	7/8"	4.5 Lbs
T21R	Drop Centre Tire Spoon	18"	11/16"	1.8 Lbs

4220-15 — Bead Keepers



31710



AME-72150



GT-12894



GT-12894C



GT-12894CW



GT-12894P

Code	Description
31710	Brass Truck Bead Keeper
AME-72150	AME Truck Bead Keeper
GT-12894	Gaither Drop Forged Steel Truck Bead Keeper
GT-12894C	Polymer Coated Steel Truck Bead Keeper
GT-12894CW	Wide Mouth Rubberhead Bead Keeper
GT-12894P	Gaither Dual Steel Truck Bead Keepers With Cable

4220-20 — Lock Ring Tools



Lock Ring Tools are Designed to Remove Most Truck Lock Rings • A Must-Have for Anyone Mounting or Demounting Multi-Piece Rims • Use in Pairs

Code	Description	Length	Diameter	Weight
T23	Truck Lock Ring Remover	24"	11/16"	2.4 Lbs
T23A	Truck Lock Ring Remover	30"	11/16"	3.1 Lbs
T23B	Combination Rim / Ring Tool	23-1/2"	11/16"	2.4 Lbs
T25	Rim Lock Tool	18"	11/16"	1.8 Lbs
T27	Special Lock Ring Tool	18"	11/16"	1.8 Lbs
T27A	Lock Ring Tool	18"	11/16"	1.8 Lbs
T48A	Heavy Duty Lock Ring Tool	37"	3/4"	4.6 Lbs

4220-40 — Tire Lifters

Code	Description	Length	Diameter	Weight
T950	Ironman Ergonomic Tire Lifting Bar • Specially Designed Forged Ends Work From Either Side of the Wheel Assembly as it Lays Flat — Knob End for Hub Side Up and Spoon End for Hub Side Down • Easily and Safely Lift Heavy, Awkward Truck Tire and Wheel Assemblies • Lift All Sizes and Types of Small and Large Heavy Truck Wheels — Standard Sizes Including 22.5" and 24.5" Wheels, European, Super Wide and Super Single Size	58"	1"	10 Lbs



T950



31710 Bead Keepers In Use

4230-10 — Bead Seating Air Blasters



BS07



CH13AL-MTO



CH5



GT-12913B2J



GT-BB03LM



GT-BB06L



GT-BB09L



GT-BB12L



GT-GB5Z



GT-GB5Z1

<i>Code</i>	<i>Description</i>
BS07	6 Gallon Cheetah Wide Nozzle Bead Seater
CH13AL-MTO	13 Gallon Cheetah Aluminum Bead Seater
CH5	5 Gallon Cheetah Bead Seater
GT-12913B2J	Gaither Jet Assisted Barrel for GT-BB12L and GT-GB38L
GT-BB03LM	Gaither Manual Bead Bazooka Bead Setting System • Black • Powerful Air Release • Double Barrel Fire • Use On Passenger and ATV Tires
GT-BB06L	6 Litre Gaither Bead Bazooka Bead Setting System • Powerful Air Release • Double Barrel Fire • Use for ATV, Passenger and Light Truck Tires
GT-BB09L	9 Litre Gaither Bead Bazooka Bead Setting System • Powerful Air Release • Double Barrel Fire • Use for Passenger and Commercial Vehicle Tires
GT-BB12L	12 Litre Gaither Bead Bazooka Bead Setting System • Powerful Air Release • Double Barrel Fire • Use for Commercial Vehicle and Light Agricultural Tires
GT-GB5Z	5 Gallon Gaither Bead Booster
GT-GB5ZA	5 Gallon Gaither Automatic Bead Booster



4230-20 — Bead Seating O-Rings

One-Piece Rubber Tube for Mounting Tires • As the Tire is Inflated the Bead Seater Forms a Seal Between the Rim and the Tire Allowing the Air Pressure to Force the Beads Into the Rim Flange • As Proper Pressure is Reached the Bead Seater Slides Out and Over the Rim

Code	Description
1994	O-Ring Style Bead Seater • 16.5" - 17.5"
1996	O-Ring Style Bead Seater • 19.5"
1997	O-Ring Style Bead Seater • 22.5" and 24.5"
BS-1314	O-Ring Style Bead Seater • 13" and 14"
BS-1415	O-Ring Style Bead Seater • 14" and 15"
BS-16	O-Ring Style Bead Seater • 16"
BS-17	O-Ring Style Bead Seater • 17"
BS-18	O-Ring Style Bead Seater • 18"
BS-20	O-Ring Style Bead Seater • 20"
BS-22	O-Ring Style Bead Seater • 22"



BS-1314

4230-24 — Bead Expanders

Bead Expanders Fit Most Bias Ply Tubeless Tires • A Pliable Neoprene Rubber Tube is Encased in a Tough, Long-Lasting Nylon Cover • Bead Expanders Slip Easily Over the Tire and Withstand Contact With Oil, Grease, Solvents and Acids • Expands the Bead by Compressing Tread to Seat Beads • T131 is for Smaller Tires and T133 is for Standard Bias Ply Tires • Both Models Feature an Over-Pressure Relief Valve and External Pressure Quick Release Valve for Safe Operation

Code	Description
T131	Bead Expander • 10" to 22"
T133	Bead Expander • 22" to 32"



T131

4230-30 — Hydraulic Bead Seaters

Code	Description
AME-11900	OTR Bead Seat Band Installer • Uses Hydraulic Force to Install Bead Bands on Earthmover Tires • 25 Ton Force



AME-11900

4240-10 — Hydraulic Combi Bead Breakers



AME-11010



AME-11015



AME-11020



FPL2100



FPL2200

Code	Description
AME-11010	AME Combi Bead Breaker • Used on Construction Wheels up to 25" • Works on Single, 2 and 3 Piece Wheels • Tool Clamps Hydraulically to the Wheel and Breaks Bead With 11 Tons of Force • 3.75" Stroke Length • Used With 10000 PSI (700 Bar) Air/Hydraulic Pump • Weight 34 Lbs
AME-11015	Titan Agricultural Bead Breaker • 10 Ton Cylinder has Enough Force to Break Most Beads • 4" Stroke Length • Will Break All Single and 2 Piece Wheels and Most 3 Piece Wheels • Weight 34 Lbs
AME-11020	AME Modified Combi Bead Breaker • Most Parts Interchange With Common Bead Breakers • Larger Clamp and Feet Allow the Tool to Easily Clamp Onto Wheels • Compact Design Allows the Tool to be Used on the Front or Back Side of Wheel • Weight 38 Lbs
FPL2100	FPL2100 — Combi Bead Breaker FPL2200 — Maxi Bead Breaker Works On Single, 2 and 3 Piece Truck Tires, All Agricultural Rims, and Construction Wheels Up To 25" (FPL2100 Combi) • FPL2200 Maxi is Used With All 3 Piece Wheels That Replaced Older 5 Piece Wheels • Works on Front or Back Wheel • Both Clamping and Bead Breaking Actions Are Performed Automatically
FPL2200	

4240-12 — Hydraulic Dual AG Bead Breakers



AME-11060



AME-11065



FPL1500

Code	Description
AME-11060	AME Dual Agricultural Bead Breaker • 10 Ton Cylinder Has Enough Force to Break All Tractor Beads • Unique Compact Design Fits into the Tightest Spaces — Only 3" Wide at the Narrowest Point • Spreads to 26" • Used to Break The Inside Bead of the Outside Tire on a Dual Assembly • Can Also be Used to Break Inside Bead of Inside Tire When the Tool Is Placed Against the Frame of the Vehicle • Used With 10000 PSI (700 Bar) Air/Hydraulic Pump • Weight 39 Lbs
AME-11065	AME Dual Agricultural Bead Breaker • 5 Tons of Pushing Force • Lightweight • Easy to Handle • Only Requires 4-1/2" of Operating Space • Designed for all Agricultural Applications • Opens to 12" Wide • Weight 20 Lbs
FPL1500	Dual Agricultural Inside Bead Breaker • Breaks the Inside Bead on the Outside Dual Tire and Breaks the Bead on the Inside Dual Tire on Tractor Wheels • No Need to Remove the Outside Wheel to Change the Tire on the Outside Dual • Compact Design — Needs Only a 3" Operating Space

4240-14 — Hydraulic Bead Push Off



AME-11080

Code	Description
AME-11080	AME Light Weight Bead Push Off Tool for Removing Combine and Tractor Tires After Breaking the Bead • 4 Tons of Hydraulic Force • 5-1/2" Stroke • Removable Handle • Use With Any 10000 PSI (700 Bar) Air/Hydraulic Pump • Weight 9 Lbs

4240-16 — Hydraulic 3 Piece Wheel Bead Breakers

Code	Description
AME-11076	Diamond Back Aluminum Bead Breaker With Protective Carrying Case • Lightweight Aluminum Reduces Weight by 40% • Longer Feet Allow for Better Fit Onto the Wheel/Rim • Feet Fully Engage Rim Flange and Push Against the Bead of the Tire • Weight 31 Lbs
AME-11090	AME Lightweight OTR Stinger Bead Breaker for Breaking 3 Piece Wheels • Mechanically Clamps to Wheel Regardless of Size or Clearance • 10 Ton / 8" Stroke Cylinder Pushes Bead Back Away From the Wheel • Unique Head is Designed for the Tool to Push on the Bead — Not the Side Wall of the Tire • Comes With 2 Spacer Wedges to Prevent Bead From Re-Seating • Includes Tool Box • Weight 29 Lbs
FPL1000	FPL1000 — Aluminum Bead Breaker FPL1100 — Aluminum Bead Breaker With Extra Long Feet, Larger Opening, and Longer Reach
FPL1100	Engineered to Work on All Rim Types Including Most New High Flanged 3-Piece Wheel Assemblies and All Single, Two, and Three Piece Tires and Rims • Ideal for Heavy Duty Truck, Construction Wheels, Farm Equipment, Graders, Combines, Forestry Equipment and Skidders • Use With All 3-Piece Wheels That Replace Older 5-Piece Wheels • Lightweight, High Strength Aluminium With Metal Jaws • Both Clamping and Bead Breaking Actions Are Performed Automatically • The Clamping Jaw Pivot Pin Can Be Placed in One of the Four Jaw Pivot Positions for Use With Different Width Flanges



AME-11076



AME-11090



FPL1000

4240-18 — Hydraulic 5 Piece Wheel Bead Breakers

Code	Description
AME-11000	AME-11000 — OTR Giant Tire Bead Breaker • Only Works on 5 Piece Wheels With Bead Loosening Pockets • Most Popular Tool for Breaking Beads on Earthmover Tires Sizes 25" - 51" • 4-1/4" Stroke Ram • Use With Any 10000 PSI (700 Bar) Air/Hydraulic Pump • Weight 33 Lbs
AME-11001	AME Aluminum 5 Piece Bead Breaker for Use on 25" - 51" 5 Piece Wheel Assemblies • Includes 2 Aluminum Bead Wedges • Thinner Hook Allows for Use on Smaller Bead Pockets • 4 Bead Pocket Hooks for Increased Range of Wheel Styles Available
AME-11005	Titan Earthmover Tire Bead Breaker • 10 Ton Cylinder Has Enough Force to Break Most Beads • 4" Stroke Length • Unit Will Work on 5 Piece Wheels With Bead Loosening Pockets • Weight 34 Lbs
AME-11030	AME OTR Giant Tire Bead Breaker for Use on Earth Mover Wheels 39" - 63" • 6" Stroke Breaks All Beads • 16270 Kit Has Longer Hooks in Order to Fit Onto 63" Wheels • Used With Large Capacity (5 Quart or More) 10000 PSI (700 Bar) Air/Hydraulic Pump • Weight 52 Lbs
AME-11040	AME OTR 5 Piece Rim Bead Breaker • Clamps to Wheel Mechanically • Hydraulic Ram Assembly is Used to Break The Bead • Designed for Use on 5 Piece Wheels Which Do Not Have Bead Loosening Pockets • 10" Stroke • Includes 6 Curved Wedges Used to Prevent Tire From Re-Seating • Used With 10000 PSI (700 Bar) Air/ Hydraulic Pump or Hand Operated Hydraulic Pump • Weight 52 Lbs
AME-11044	AME OTR 3000 Giant Bead Breaker With Universal Jaw Kit • Designed to Work on Topy and Rimex OE Wheels Found on Terex, Komatsu, Liebherr and Le Tourneau • Designed to Prevent the Tool From Kicking Out While Under Load • 6" Stroke Ram Delivers Maximum Force • Jaw Design Works on Most Wheels 51" - 63" • Weight 54 Lbs
AME-11050	OTR Giant Tire Bead Breaker • Compact • Lightweight • Used Primarily on 25" and 29" Earthmover Wheels • Only Works on 5 Piece Wheels With Bead Loosening Pockets • 2-1/8" Stroke • 10 Ton Hydraulic Force • Used With 10000 PSI (700 Bar) Air/Hydraulic Pump • Weight 23 Lbs
FPL1800	OTR Giant Bead Breaker • For Use on Heavy Duty 3 Piece 25" Rims or Larger, Rims With Open or Closed Center Wheels and Wheels Equipped With Cat Shur-Lok Adaptors



AME-11000

AME-11001



AME-11005



AME-11030



AME-11040



AME-11044



AME-11050



FPL1800

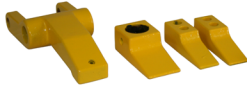
4240-19 — Bead Breaker Adaptors and Upgrade Kits



AME-16070



AME-16150



AME-16200



AME-16270



AME-17200

Code	Description
AME-16070	AME Caterpillar Shur-Lok Rim Adaptor Kit Used With AME-11000 OTR Giant Tire Bead Breaker • Designed for Use on Caterpillar Shur-Lok Rims
AME-16150	AME Conversion Kit for Combi Bead Breaker to Increase Opening • Will Fit Models From IMT, FEC, Stellar and Esco
AME-16200	AME Bead Breaker Upgrade Kit Converts Standard Combi Style Bead Breakers to Fit 3 Piece Wheels • Will Fit Models From IMT, FEC, Stellar and Esco • Includes AME-16150 Kit to Guarantee Fit on All Tools — Regardless of Age
AME-16270	AME OTR Bead Breaker Hook Kit For 63" Wheels • Upgrade Kit For AME-11030 for Larger Rim Flanges on 63" Assemblies • Includes Extended Pushing Spade and 2 Extended Bead Pocket Hooks
AME-17200	AME Diamondback Bead Breaker Upgrade Kit • Works With Existing Aluminum Bead Breakers Including AME-11070 and IMT-1000 • Longer Feet Allow the Tool to Fully Engage the Bead of the Tire • Helps Tool to Push on the Bead — Not the Sidewall • Installation Instructions Included

4240-20 — Hydraulic Rams



AME-13030



AME-13060



AME-13095

Code	Description
AME-13010	AME 10 Ton Hydraulic Ram for 5 Piece Wheels • Used to Break Rear Beads • 2-1/8" Stroke • Removable Plunger Adaptor Allows the Use of a Variety of Threaded Attachments • Retracted Height 4-3/4"
AME-13020	AME 10 Ton Hydraulic Ram for 5 Piece Wheels • Used to Break Rear Beads • 4" Stroke • Removable Plunger Adaptor Allows the Use of a Variety of Threaded Attachments • Retracted Height 6-3/4"
AME-13030	AME 10 Ton Hydraulic Ram for 5 Piece Wheels • Used to Break Rear Beads • 6-1/8" Stroke • Removable Plunger Adaptor Allows the Use of a Variety of Threaded Attachments • Retracted Height 9-3/4"
AME-13040	AME 10 Ton Hydraulic Ram for 5 Piece Wheels • Used to Break Rear Beads • 8" Stroke • Removable Plunger Adaptor Allows the Use of a Variety of Threaded Attachments • Retracted Height 11-3/4"
AME-13050	AME 10 Ton Hydraulic Ram for 5 Piece Wheels • Used to Break Rear Beads • 10-1/8" Stroke • Removable Plunger Adaptor Allows the Use of a Variety of Threaded Attachments • Retracted Height 13-3/4"
AME-13060	AME 30 Ton Hydraulic Ram for 5 Piece Wheels • Used to Break Rear Beads • 2-7/16" Stroke • Removable Plunger Adaptor Allows the Use of a Variety of Threaded Attachments • Retracted Height 4-5/8"
AME-13090	AME 25 Ton Hydraulic Ram for 5 Piece Wheels • Used to Break Rear Beads • 8-1/4" Stroke • Removable Plunger Adaptor Allows the Use of a Variety of Threaded Attachments • Retracted Height 12-3/4"
AME-13095	AME 25 Ton Hydraulic Ram for 5 Piece Wheels • Used to Break Rear Beads • 10-1/8" Stroke • Removable Plunger Adaptor Allows the Use of a Variety of Threaded Attachments • Retracted Height 14-3/4"
AME-13100	AME 25 Ton Hydraulic Ram for 5 Piece Wheels • Used to Break Rear Beads • 6-1/4" Stroke • Removable Plunger Adaptor Allows the Use of a Variety of Threaded Attachments • Retracted Height 10-3/4"

4240-22 — Hydraulic Ram Kits

Code	Description
AME-13075	AME Steel-A-Stack Hydraulic Ram Kit • Allows You to Select Your Ram Length From 3.5" up to 11.5" • Extensions Can be Used Individually or Together • Steel Extensions are Durable Enough for OTR Applications • Extensions Include 1", 2" and 3" Options • 3" Extension Includes a Screw in Saddle That Extends Another 2" • Comes in a Heavy Duty Carrying Case • 10 Ton • 1.5" Stroke



AME-13075

4240-24 — Air / Hydraulic Pumps

Code	Description
AME-15000 	Turbo li 3.5 Quart Air / Hydraulic Pump With Polyglass Reservoir • Builds 10,000 PSI of Pressure to Fit the Majority of Tools on the Market • Operates on 80-120 Psi of Inlet Air Pressure • Durable Metal Air Motor Assemblies • Designed Specific to Conditions Normally Associated With Otr Sites • Oil Capacity: 3.5 Quarts (3.25 Liters) • 16 Lbs
AME-15905	2.5 Quart Economy Titan Air / Hydraulic Pump • 10,000 PSI Maximum Pressure • Ideal for Rolling Bridge Jacks • 14 Lbs
AME-15920 	5 Quart Air / Hydraulic Pump With Steel Reservoir • Builds 10,000 PSI of Pressure to Fit the Majority of Tools on the Market • Operates on 80-120 Psi of Inlet Air Pressure • Durable Metal Air Motor Assemblies • Designed Specific to Conditions Normally Associated With Otr Sites • Oil Capacity: 5 Quarts (4.7 Liters) • 23 Lbs
AME-15921 	5 Quart Air / Hydraulic Pump With Plastic Reservoir • Builds 10,000 PSI (Max) of Pressure to Fit the Majority of Tools on the Market • Operates on 80-120 Psi of Inlet Air Pressure • Durable Metal Air Motor Assemblies • Designed Specific to Conditions Normally Associated With Otr Sites • Oil Capacity: 5 Quarts (4.7 Liters) • 19 Lbs
AME-15924	5 Quart Economy Titan Air / Hydraulic Pump With Steel Reservoir • Builds 10,000 PSI Hydraulic Pressure • Operates With as Little as 80 Psi • Ideal for Use With Tools That Require Large Volume of Oil (55, 100 Ton Cylinders) • Durable Metal Air Motor
AME-15925	5 Quart Economy Titan Air / Hydraulic Pump With Polyethylene Reservoir • Builds 10,000 PSI Hydraulic Pressure • Operates With as Little as 80 Psi • Ideal for Use With Tools That Require Large Volume of Oil (55, 100 Ton Cylinders) • Durable Metal Air Motor • 14 Lbs
AME-15940 	2 Gallon Air / Hydraulic Pump With Steel Reservoir • Builds 10,000 PSI of Pressure to Fit the Majority of Tools on the Market • Operates on 80-120 Psi of Inlet Air Pressure • Durable Metal Air Motor Assemblies • Designed Specific to Conditions Normally Associated With Otr Sites • Oil Capacity: 2 Gallons (7.6 Liters) • 36 Lbs



AME-15000



AME-15905



AME-15920



AME-15921



AME-15924



AME-15925



AME-15940

4240-26 — Air / Hydraulic Pumps — Accessories

Code	Description
AME-16030	8' Hydraulic Hose Only • 1/4" x 10,000 PSI Working Pressure • Complete With 3/8" NPT Hydraulic Coupler (AME-16060) and Adaptor (AME-16050)
AME-16050	3/8" Hose Adaptor • Male • 10,000 PSI
AME-16060	3/8" High Flow Hydraulic Coupler • Female • 10,000 PSI



AME-16030



AME-16050



AME-16060

4240-30 — Pneumatic Bead Breakers



AME-71600



GT-ABB01

Code	Description
AME-71600	AME Little Buddy Manual Bead Breaker • Can Work on a Tire Without Removing the Wheel • Great for All Kinds of Tires — ATV, Golf Cart, Truck, Bus, Agricultural and Even Backhoe Tires • Operates With an Air Ratchet or Manual Wrench (Not Included) • Weight 12 Lbs
GT-ABB01	Gaither Pneumatic Bead Breaker • Recommended for Agricultural, Small OTR and Most Truck Tires • Extremely Fast — Saves Time Over Conventional Hydraulic Bead Breakers • Weighs Only 17 Lbs • Includes Blow Case for Storage • Requires a Minimum of 85 PSI



4240-40 — Manual Bead Bars



T26A



T41



T42



T52

Code	Description
T26A	Bead Breaking Tool and Driving Iron • Used for Loosening Rusted Truck and Bus Beads • 11-3/4"
T41	Swan Neck Bead Breaking Leverage Bar • 30"
T42	Bead Forcing Tool for 5° Rims • 30"
T52	Bead Breaking Tool for Truck, Farm and OTR • 33"

4240-42 — Push Bars

Code	Description
AME-92000	AME 2-Way OTR Push Bar Tool • 25" to 51" Multi-piece Wheels • For Use With Boom Style Service Trucks



AME-92000

4240-44 — Bead Breaking Slide Bars

Code	Description
AME-71500	AME Big Buddy Heavy Duty Slide Bar Bead Breaker With Spring Reduces User Fatigue and Kickback • Weight 24 Lbs
GT-12026B	Gaither Slide Bar/Hammer Bead Breaker With Spring • Only Use on Wheels Without a Hump
T24B	Economy Slide Bar Bead Breaker • 46"
T26B	Heavy Duty Slide Bar Bead Breaker • 50"



AME-71500



GT-12026B



T24B



T26B

4240-60 — Bead Wedges

Code	Description
AME-75005	AME OTR Bead Wedge • High Impact Nylon Material — Avoid Metal on Metal Contact • Allows Bead Breaker to Fit Between Tire and Wheel — Even on Skidder Tires • 8.5" L x 3.25" W x 1" H • Weight 10.4 oz



AME-75005

4240-70 — Flange Ring Tools

Code	Description
AME-93000	AME OTR Flange Ring Puller • Lifts the Rim Base and Bead Seat Band From the Tire • Aids in Bead Seating During Inflation • Attaches to a Standard Boom Style Service Truck • 4 Point Hook/Chain Assembly for Optimal Lifting • Chain Lengths 30" • Includes 2 Flat Hooks and 2 Tapered Hooks for Use on All Rim Styles • Weight 32 Lbs



AME-93000

4250-10 — Fiberglass Handled Hammer

Power-Drive Fiberglass Handle Gives 20% More Driving Power, Yet Reduces User Fatigue



TG337

TG35

TG36

Code	Description	Length	Head	Weight	Handle
TG337	Professional Dead Blow Hammer • Steel Face / Soft Face	13-1/2"		2.2 Lbs	
TG35	Fiberglass Handled Heavy Duty Tire Hammer	18"	4.8 Lbs	6.6 Lbs	TG11CH
TG36	Fiberglass Handled Heavy Duty Tire Hammer	18"	5.8 Lbs	6 Lbs	TG11CH

4250-12 — Fiberglass Handled Wedge

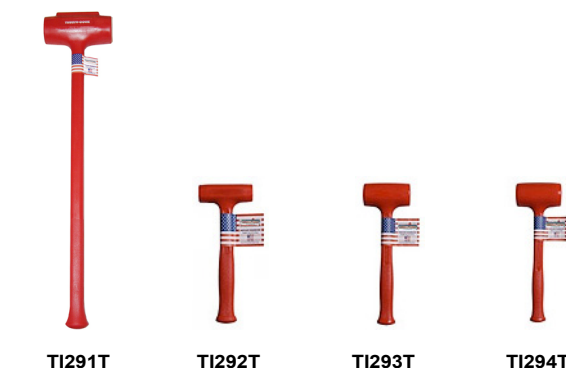


TG11D

TG11E

Code	Description	Length	Weight	Handle
TG11D	Fiberglass Handled Bead Breaking Wedge	18"	4.8 Lbs	TG11DH
TG11E	Fiberglass Handled Bead Breaking Wedge	32"	11 Lbs	TG11EH

4250-15 — Composite Hammers



TI291T

TI292T

TI293T

TI294T

Code	Description	Length	Weight
TI291T	Trusty Dead Blow Sledge Hammer	36"	12 Lbs
TI292T	Trusty Slimline Soft Face Sledge Hammer	10-5/8"	1.125 Lbs
TI293T	Trusty Standard Face Soft Face Sledge Hammer	12-3/4"	1.6 Lbs
TI294T	Trusty Standard Soft Face Model Sledge Hammer	14-3/8"	2.8 Lbs

4250-20 — Polyurethane Hammers



TI290T

Code	Description	Length	Weight
TI290T	Trusty Dead Blow Sledge Hammer	30"	9 Lbs

4250-30 — Wood Handle Hammer

Code	Description	Length	Head	Weight	Handle
T35	Wood Handled Heavy Duty Tire Hammer	16-1/2"	5.5 Lbs	6.1 Lbs	T11DH



T35

4250-31 — Wood Handle Rubber Mallets

Code	Description	Length	Head
T32	Wood Handled Rubber Mallet • Rubber Head Minimizes Marring Surfaces.	17"	2 Lbs



T32

4250-32 — Wood Handle Wedge

Code	Description	T11D	Length	Weight	Handle
T11D	Wood Handled Bead Breaking Wedge		17"	4-3/5 Lbs	T11DH
T11E	Wood Handled Bead Breaking Wedge		30"	8-1/2 Lbs	T11EH
T11ES	Wood Handled Bead Breaking Wedge		30"	8-1/2 Lbs	T11EH-GRIP



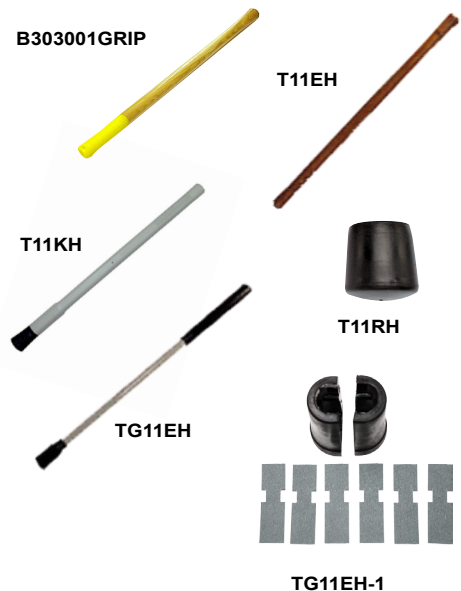
T11E



T11ES

4250-50 — Replacement Parts

Code	Description
B3033001GRIP	Replacement Handle for T11 Series With Grip Paint Handle
T11CH	17" Replacement Wooden Hickory Handle for T35
T11DH	17" Replacement Wooden Hickory Handle for T11D
T11EH	30" Replacement Wooden Hickory Handle for T11E
T11EH-GRIP	Replacement Handle for T11 Series With Grip Paint Handle
T11KH	32" Replacement Polymer Handle for The Ken-Tool T11K
T11RH	Replacement Rubber Head for T11R, TG11R, T31, TG31, T33R, and TG33R
T34RH	Replacement Rubber Head for T34, TG34, T35, TG35, T36, and TG36
TG11CH	18" Replacement Fiberglass Handle for TG35
TG11DH	18" Replacement Fiberglass Handle for TG11D
TG11EH	32" Replacement Fiberglass Handle for Ken-Tool TG11E
TG11EH-1	Nu-Lok Adaptor



TG11EH-1

Part # — Page	Part # — Page	Part # — Page	Part # — Page
2-RPT — 42-3	AME-16050 — 42-13	GT-12894P — 42-6	T35 — 42-17
1994 — 42-9	AME-16060 — 42-13	GT-12913B2J — 42-8	T38 — 42-5
1996 — 42-9	AME-16070 — 42-12	GT-ABB01 — 42-14	T39 — 42-5
1997 — 42-9	AME-16150 — 42-12	GT-BB03LM — 42-8	T41 — 42-14
31710 — 42-6	AME-16200 — 42-12	GT-BB06L — 42-8	T42 — 42-14
31810 — 42-3	AME-16270 — 42-12	GT-BB09L — 42-8	T45A — 42-3
32129 — 42-2	AME-17200 — 42-12	GT-BB12L — 42-8	T45A-2000K — 42-4
AME-11000 — 42-11	AME-71000 — 42-2	GT-GB5Z — 42-8	T45AC — 42-3
AME-11001 — 42-11	AME-71025 — 42-2	GT-GB5ZA — 42-8	T45AS — 42-3
AME-11002 — 42-2	AME-71050 — 42-2	GT-J1 — 42-2	T45HD — 42-3
AME-11005 — 42-11	AME-71051 — 42-2	T1X — 42-5	T46A — 42-4
AME-11010 — 42-10	AME-71052 — 42-2	T2X — 42-5	T46B — 42-4
AME-11015 — 42-10	AME-71500 — 42-15	T6A — 42-4	T46C — 42-4
AME-11020 — 42-10	AME-71600 — 42-14	T9A — 42-4	T47A — 42-3
AME-11030 — 42-11	AME-72150 — 42-6	T11CH — 42-17	T47B — 42-4
AME-11040 — 42-11	AME-75005 — 42-15	T11D — 42-17	T47C — 42-4
AME-11044 — 42-11	AME-92000 — 42-15	T11DH — 42-17	T48A — 42-6
AME-11050 — 42-11	AME-93000 — 42-15	T11E — 42-17	T52 — 42-14
AME-11060 — 42-10	B3033001GRIP — 42-17	T11EH — 42-17	T131 — 42-9
AME-11065 — 42-10	BS07 — 42-8	T11EH-GRIP — 42-17	T133 — 42-9
AME-11076 — 42-11	BS-16 — 42-9	T11ES — 42-17	T950 — 42-7
AME-11080 — 42-10	BS-17 — 42-9	T11KH — 42-17	T2001 — 42-2
AME-11090 — 42-11	BS-18 — 42-9	T11RH — 42-17	T2002 — 42-2
AME-11900 — 42-9	BS-20 — 42-9	T16A — 42-4	TG11CH — 42-17
AME-12105 — 42-2	BS-22 — 42-9	T19 — 42-5	TG11D — 42-16
AME-13010 — 42-12	BS-1314 — 42-9	T19A — 42-5	TG11DH — 42-17
AME-13020 — 42-12	BS-1415 — 42-9	T20 — 42-5	TG11E — 42-16
AME-13030 — 42-12	CH4 — 42-3	T20A — 42-5	TG11EH — 42-17
AME-13040 — 42-12	CH5 — 42-8	T21F — 42-5	TG11EH-1 — 42-17
AME-13050 — 42-12	CH13AL-MTO — 42-8	T21HD — 42-5	TG35 — 42-16
AME-13060 — 42-12	CH22 — 42-3	T21R — 42-5	TG36 — 42-16
AME-13075 — 42-13	CH23 — 42-3	T22M — 42-5	TG337 — 42-16
AME-13090 — 42-12	FPL1000 — 42-11	T23 — 42-6	TI290T — 42-16
AME-13095 — 42-12	FPL1100 — 42-11	T23A — 42-6	TI291T — 42-16
AME-13100 — 42-12	FPL1500 — 42-10	T23B — 42-6	TI292T — 42-16
AME-15000 — 42-13	FPL1800 — 42-11	T24B — 42-15	TI293T — 42-16
AME-15905 — 42-13	FPL2100 — 42-10	T25 — 42-6	TI294T — 42-16
AME-15920 — 42-13	FPL2200 — 42-10	T26A — 42-14	TNT-100-1 — 42-2
AME-15921 — 42-13	GT-12026B — 42-15	T26B — 42-15	TNT-200-M — 42-2
AME-15924 — 42-13	GT-12100 — 42-2	T27 — 42-6	
AME-15925 — 42-13	GT-12894 — 42-6	T27A — 42-6	
AME-15940 — 42-13	GT-12894C — 42-6	T32 — 42-17	
AME-16030 — 42-13	GT-12894CW — 42-6	T34RH — 42-17	

B

Bead Breaking Tools

Air / Hydraulic Pumps: 42-13
 Air / Hydraulic Pumps — Accessories: 42-13
 Bead Breaker Adaptors and Upgrade Kits: 42-12
 Bead Breaking Slide Bars: 42-15
 Bead Wedges: 42-15
 Flange Ring Tools: 42-15
 Hydraulic Bead Breakers: 42-10, 42-11
 Hydraulic Bead Push Off: 42-10
 Hydraulic Ram Kits: 42-13
 Hydraulic Rams: 42-12
 Manual Bead Bars: 42-14
 Pneumatic Bead Breakers: 42-14
 Push Bars: 42-15

Bead Seating Tools

Bead Expanders: 42-9
 Bead Seating Air Blasters: 42-8
 Bead Seating O-Rings: 42-9
 Hydraulic Bead Seaters: 42-9

H

Hammers, Mallets and Wedges

Composite Hammers: 42-16
 Fiberglass Handled Hammer: 42-16
 Fiberglass Handled Wedge: 42-16
 Polyurethane Hammers: 42-16

Replacement Parts: 42-17
 Wood Handle Hammer: 42-17
 Wood Handle Rubber Mallets: 42-17
 Wood Handle Wedge: 42-17

T

Tire Bars, Irons and Spoons

Bead Keepers: 42-6
 Lock Ring Tools: 42-6
 Mount And Demount Bars: 42-3, 42-4
 Spoons: 42-5
 Tire Lifters: 42-7

Tire Mount and Demount Systems

1-Piece Demount Systems: 42-2
 Manual Tire Changers: 42-3
 Manual Tire Changers — Accessories: 42-3
 Multi-Piece Demount Systems: 42-2



DID YOU KNOW PREMA CARRIES A FULL LINE OF TIRE REPAIR EQUIPMENT AND SUPPLIES AND IS IN YOUR AREA?

An extensive line of brand name products, all competitively priced.

Tire Repair Materials & Chemicals

Radial Repairs
Bias Repairs
Agriculture Repairs
OTR Repairs
Tube Stems
Universal Repairs
Combi Patch/Plugs
Pre-Buff Cleaners
Vulcanizing Cements
Over-Buff Sealers
Bead Sealers

Lifting Tools

Bottle Jacks
Hydraulic Rams
Lift Pads
Floor Jacks
Jack Stands
Forklift Jacks
Garage Jacks
Bladder Jacks

Service Chemicals

Mounting Compound
Murphy's Liquid Lubricants
Brake Cleaner
Penetrants
Universal Paste
SKID
Silicone Sprays
Tire Sealant
Tire Paint
Tire Shine
Winter Lubricants

Shop Supplies & Equipment

Hand Cleaner
Tire Bags
Dunk Tanks
Work Gloves
Nitrile Gloves
Seat Gloves
Seat Covers
Tire Carts
Floor Mats

Tire Repair Tools

Brushes
Adaptors
Reamers
Probe Tools
Scrapers
Carbide Cutters
Insert Tools
Buffing Stones
Tire Spreaders

Wheel Weights & Balancing Beads

Passenger Weights
Truck Weights
3M Balancing System
Coloured Weights
Zinc Weights
Steel Weights
Magnum Balancing Beads
Counteract Balancing Beads

Wheel Balancing Tools

Adhesive Wheel Weight Remover
Wheel Weight Hammers
Haweka Flange Plates
Duo Collets
Haweka Quick Plates
Haweka Quick Nuts
Replacement Shafts
Cones

Air Tools & Accessories

IR Impact Wrenches
IR Replacement Parts
CP Impact Wrenches
CP Replacement Parts
Tool Covers
Sockets
Ratchets
3M Abrasives
Grinders
Buffers
Needle Scalers

Valves

Passenger
Truck
OTR
Air Liquid
Super Large Bore
Straight or Bent Caps & Cores
Brass or Nickel Alcoa Valves
Enki Valves
4-Way Tools
Fishing Tools
Double Seal Caps
Installation Tools
Grommets
O-Rings

Wheel Service Tools & Equipment

Bead Breakers
Torque Wrenches
Bead Blasters and Bazookas
Hydraulic Pumps
Fasteners (Nuts, Studs & Clamps)
Tire Irons & Bead Hammers
Calcium Pumps
Wheel Guards
Mount/Demount Tools
Hydraulic Rams

Gauges & Air Controls

Pencil Gauges
Master Gauges
Truck Gauges
Inflation Gauges
Calibratable Gauges
Digital Gauges
Al Liquid
Chucks
Nipples
Couplers
Bushings
Crimpers
Hoses
Ferrules
Manifolds
Whip Hoses

TPMS

EZ-Sensor
Redi-Sensor
OE Replacement
Sensors
Replacement Valves
Scan Tools (w/OBD)
Service Kits
Torque Wrenches
T-10 & T-20 Screw
Drivers
Core Tools

Retread

Envelopes
Rasps
Grinding Stones
Carbide Cutters
Hub Lube
Mold Release
Rope Rubber
Sprayers
Blades
Cement
Cushion Rubber
Poly Film
Wicking Pads
Staples

Section Repair

Vulcanizers
Cushion Rubber
Cup Cutters
Carbide Cutters
Tire Stands
HD Skivers
Hand Tools
Flex Shaft Buffers
Rope Rubber
Rasps
Grinding Stones

Miscellaneous

Tire Studs
Stud Guns
Jaw Covers
Duckheads
Plastic Inserts
Brake Lathe Bits
O-Rings
Arctic O-Rings

Your Authorized Distributor

Prema Canada

3230 Mainway - Unit 3, Burlington, ON L7M 1A5
Toll Free: 1.800.268.6311
Phone: 905.628.2303
Fax: 905.628.3646
Inquires: sales@premacanada.ca
www.premacanada.ca