

**PREMA**

# 1" CORDLESS IMPACT WRENCH

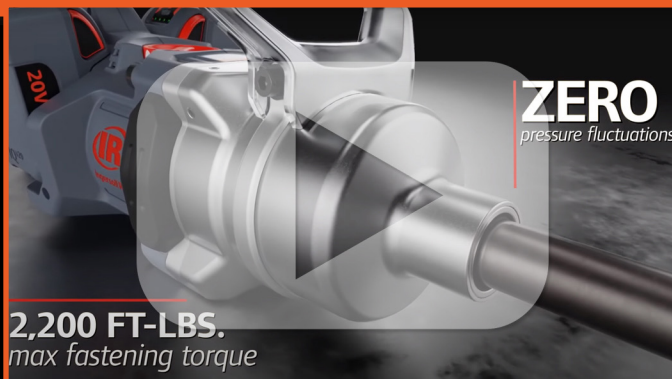
(with 6" Extended Anvil)

**IR-W9691-K4E**

- 100% mobility
- 3,000 ft-lbs of nut busting torque
- 2,200 ft-lbs of tightening torque
- Quickly switch between MAX, MID or Snug modes
- Safer and efficient roadside vehicle service
- Brushless motor
- 360° adjustable D-handle
- Impact and chemical-resistant housing
- Balanced weight for less fatigue
- Compatible with IQV®20 Series™ Battery System

**Visit Product Page**

**CLICK FOR VIDEO: INTRODUCTION**



**IR** Ingersoll Rand

## KIT INCLUDES:

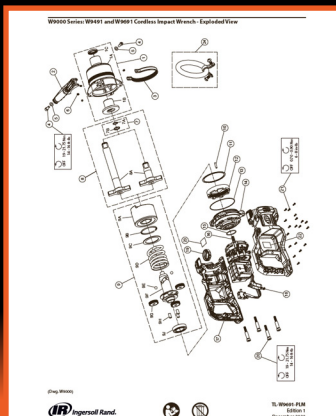
- 1 - IR-W9691 with 6" Extended Anvil
- 4 - IQV®20 5.0AH Series Batteries (IR-BL2022)
- 1 - Dual Bay Charger (IR-BC1221)



## VERSATILITY

The IR-BL2022 5.0Ah lithium-ion battery is compatible with all IQV®20 series power tools allowing you to swap batteries and tools to get the job done right every time.

## PARTS LIST



## WARRANTY SERVICE

**IR** Ingersoll Rand

**KEEP IT SIMPLE...**

Ingersoll Rand® Vehicle Service tools come with the benefit of our Managed Warranty Service. A fast and simple solution that helps you get back to work.

**WHAT CAN YOU EXPECT FROM OUR WARRANTY?**

- Prepaid US Shipping
- 5 Business Day Turnaround\*
- Tool Status Updates
- Reference Number to Track Requests

\*Business day turnaround assumes typical warranty failure and excludes shipping.

To learn more visit [www.IRTools.com/warranty](http://www.IRTools.com/warranty)  
**FOR WARRANTY REQUESTS AND QUESTIONS:**  
 Call: 800-483-4881 or Email: [IRRepairService@irco.com](mailto:IRRepairService@irco.com)

## COMPARISON

**IR** Ingersoll Rand

**COMPETITIVE STREETFIGHTER**

**W9691 CORDLESS 1" IMPACT WRENCH IQV® X2 vs Milwaukee 2868-20 Cordless Impact Wrench**

**Inside Scoop - 1" Cordless Impact Wrench, Head-to-Head Comparison:**

	INGERSOLL RAND	MILWAUKEE
BRAND MODEL	W9691	2868-20
MOTOR TYPE	Brushless	Brushless
FASTENING TORQUE (FT-LBS)	2,200	1,000
MAX FASTENING TORQUE (FT-LBS)	3,000	2,000
FREE SPEED (RPM)	450	1,000
IMPACTS PER MINUTE (RPM)	1,170	1,400
BATTERY VOLTAGE	20V X2	18V X1
CYCLES PER CHARGE (LAST MODE)	200	200
WEIGHT (W/ BATTERY (LBS))	26.1	26.8
WEIGHT (W/ BATTERY (KG))	18.7	19.2
LENGTH (IN)	26.1	25.2
WARRANTY	3 Years	2 Years

**GENERAL INFORMATION**

**Power:** Located in Power Switch Balance.  
 \*Power: Located in Power Switch Balance.  
 \*Power: Located in Power Switch Balance.

**THE BOTTOM LINE**

The Ingersoll Rand W9691 is the most powerful 1" cordless impact wrench in the world generating 3,000 ft-lbs of nut busting torque and 2,200 ft-lbs of tightening torque. With the IQV®20 Series (Dual Bay Charger) you can swap batteries and tools to get the job done right every time.

