

PREMA

1" CORDLESS IMPACT WRENCH

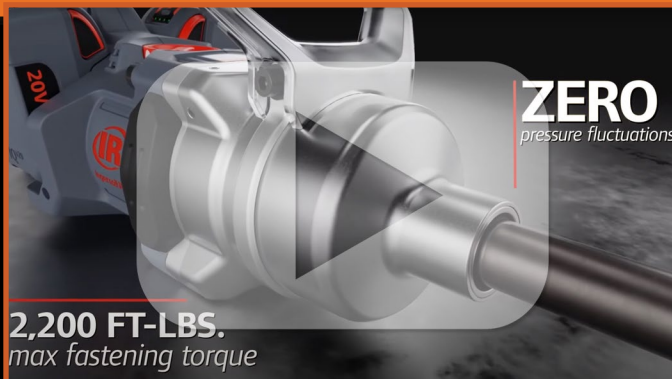
(with 6" Extended Anvil)

IR-W9691-K4E

- 100% mobility
- 3,000 ft-lbs of nut busting torque
- 2,200 ft-lbs of tightening torque
- Quickly switch between MAX, MID or Snug modes
- Safer and efficient roadside vehicle service
- Brushless motor
- 360° adjustable D-handle
- Impact and chemical-resistant housing
- Balanced weight for less fatigue
- Compatible with IQV20 Series™ Battery System

Visit Product Page

CLICK FOR VIDEO: INTRODUCTION



IR Ingersoll Rand



KIT INCLUDES:

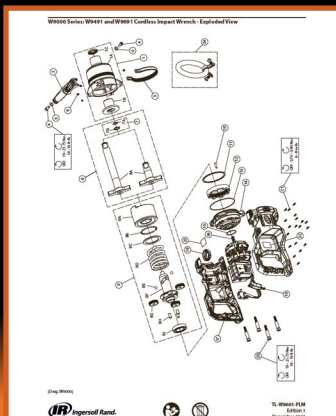
- 1 - IR-W9691 with 6" Extended Anvil
- 4 - IQV20 5.0AH Series Batteries (IR-BL2022)
- 1 - Dual Bay Charger (IR-BC1221)

VERSATILITY

The IR-BL2022 5.0Ah lithium-ion battery is compatible with all IQV20 series power tools allowing you to swap batteries and tools to get the job done right every time.



PARTS LIST



WARRANTY SERVICE

IR Ingersoll Rand

KEEP IT SIMPLE...

Ingersoll Rand® Vehicle Service tools come with the benefit of our Managed Warranty Service. A fast and simple solution that helps you get back to work.

WHAT CAN YOU EXPECT FROM OUR WARRANTY?

- Prepaid US Shipping
- 5 Business Day Turnaround*
- Tool Status Updates
- Reference Number to Track Requests

*Business day turnaround assumes typical warranty failure and excludes shipping.

To learn more visit www.IRTools.com/warranty
FOR WARRANTY REQUESTS AND QUESTIONS:
 Call: 800-483-4881 or Email: IRRepairService@irco.com

COMPARISON

IR Ingersoll Rand

COMPETITIVE STREETFIGHTER

W9691 CORDLESS 1" IMPACT WRENCH IQV20 X2 vs Milwaukee 2868-20 Cordless Impact Wrench

Inside Scoop - 1" Cordless Impact Wrench, Head-to-Head Comparison:

	INGERSOLL RAND	MILWAUKEE
BASE MODEL	W9691	2868-20
MOTOR TYPE	Brushless	Brushless
FASTENING TORQUE (FT-LBS)	2,200	1,000
MAX FASTENING TORQUE (FT-LBS)	3,000	2,000
FREE SPEED (RPM)	450	1,000
IMPACTS PER MINUTE (BPM)	1,170	1,440
BATTERY VOLTAGE	20V X2	18V X1
CYCLES PER CHARGE (LAST MINUTE)	200	200
WEIGHT (W/ BATTERY (LBS))	26.1	26.8
POWER TO WEIGHT	100.1	75.0
LENGTH (IN)	26.1	23.2
WARRANTY	3 Years	3 Years

GENERAL INFORMATION

Power - Leaders in Power-Weight Balance
 W9691 has 3x the torque of a 18V tool.
 W9691 Power-Weight Score of 100.1

Design - Durability and Ergonomics are built in
 Features precision forged steel design and accidental stops.
 Power Regulation feature only available on Ingersoll Rand tools.

Mobility - Versatility and Freedom
 No Cables or Power to Cord Design
 IQV20 Series - True Power

THE BOTTOM LINE

The Ingersoll Rand W9691 is the most powerful 1" Cordless Impact Wrench in the world generating 3,000 ft-lbs of nut busting torque and 2,200 ft-lbs of tightening torque. Utilizing the IQV20 Power Control System, it offers the most powerful performance between MAX, MID and Snug modes in the field.

Additional models
 & 18 available in 18V and 18V X2 models (W9691)

3-2-1

www.premacanada.ca

1-800-268-6311