

# SKIRT NUT®

**Not just the BEST solution for truck wheel vibration and tire wear – it's the ONLY solution!**

## Skirt Nut's Features:

**a)** 'Skirt' extends 3/16" (5mm) into the stud hole.

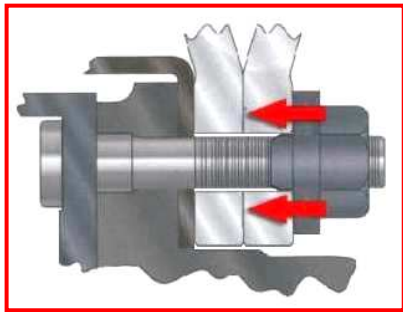


Fig A –Direct application of clamping force

**b)** Larger, stronger flange washer, beveled nut seat.

**c)** Skirt Nut® has almost twice as many threads as most **old-style** nuts.

**d)** Heavy duty flange washer has strongest fitment to nut, **2,500 lbs** pull-off resistance.

**e)** Nut produced from **Grade 10** material.

**f)** **One part number** fits all 22mm hub-piloted applications.

## Deliver these Results:

**a)** Provides true-running wheels, prevents dangerous "clocking", the number one cause of loose wheels.

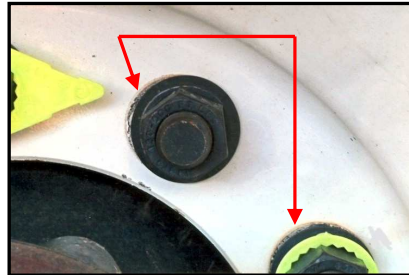


Fig B – First signs of dangerous "clocking"

**b)** Provides best, strongest flange to disc contact (largest disc contact area in the industry, 17 sq. in.).

**c)** Provides consistent clamping force, protects stud threads.

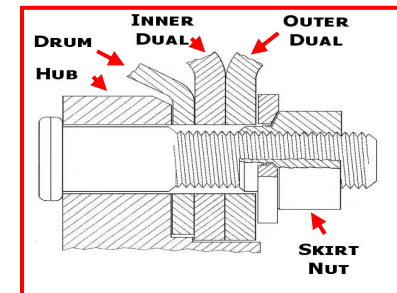
**d)** Washer will not seize on nut, will not break, does not cause false torque readings.

**e)** Threads cut through grime and grit, maintain stud's thread condition.

**f)** Specially lubricated & approved for use with **aluminum wheels**.

## and Provide these Benefits:

**a)** **Eliminates** wheel vibration from wheel-to-hub misalignment (out-of-round), improves tire wear and fuel economy.



**b)** **Eliminates river wear** and tire cupping, rebalancing costs eliminated.

**c)** **Eliminates 'Wheel off'** emergencies.

**d)** **Maintains torque** many times longer, extends hardware life.

**e)** Hardware replacement costs are reduced, safety improved.

**f)** **Versatile fitment** – no special parts for different wheels.



***Reminder: To maintain correct clamping force, improve tire wear and eliminate the risk of wheel loss, 10 Skirt Nuts per wheel are required.***