



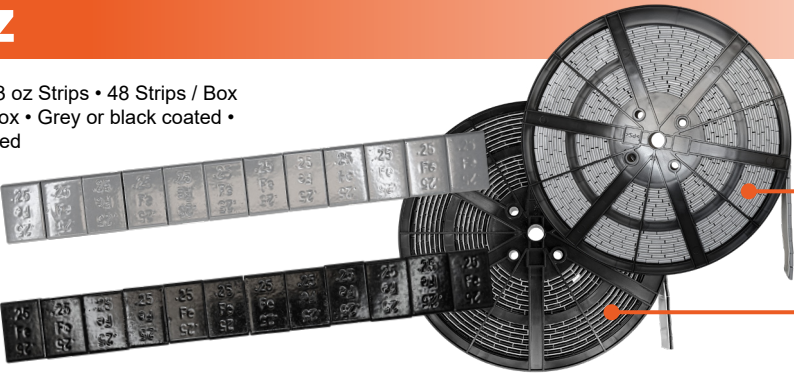
STEEL ADHESIVE WHEEL WEIGHTS  
Lead-free, low profile

1/4 oz

1/4 oz Segments • 3 oz Strips • 48 Strips / Box  
• 576 Segments / Box • Grey or black coated •  
Pre-cut and pre-taped

200576FE

200576FEBLK



1/4 oz Segments • 704 segments per roll •  
11 lb roll • Grey or black coated • Pre-taped

200576FER

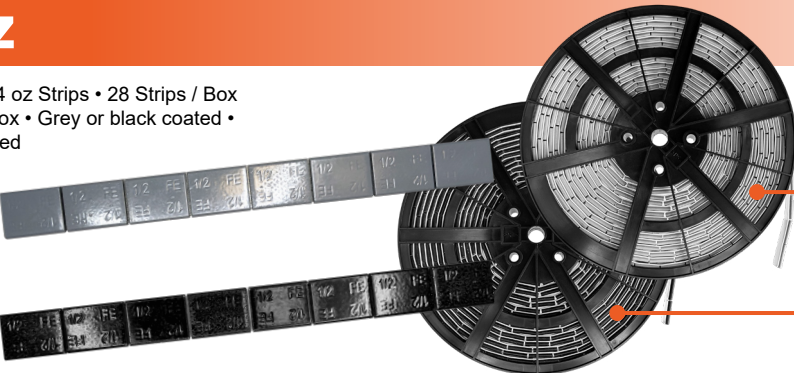
200576FERBLK

1/2 oz

1/2 oz Segments • 4 oz Strips • 28 Strips / Box  
• 224 Segments / Box • Grey or black coated •  
Pre-cut and pre-taped

300224FE

300224FEBLK



1/2 oz Segments • 352 segments per roll •  
11 lb roll • Grey or black coated • Pre-taped

300224FER

300224FERBLK



MAGNUM BALANCING BEADS

Light and Medium Truck Tire Balancing Beads • Dry Formula • TPMS  
Safe • Drop bag in and beads continuously adjust for a smooth balance



LTP-150

Code	Description	Price
LTP-60	Light • 2 oz	
LTP-100	Light • 3 oz	
LTP-150	Light • 4.5 oz	
LTP-200	Light • 6.5 oz	
MTP-250	Medium • 8.5 oz	
MTP-300	Medium • 10.5 oz	
MTP-400	Medium • 13 oz	
MTP-500	Medium • 16 oz	



MFP-300



MBP8KG

Code	Description	Price
LFP-200	Light • Fleet Tub • 24 Inner Bags of 6.5 oz	
MFP-250	Medium • Fleet Tub • 22 Inner Bags of 8.5 oz	
MFP-300	Medium • Fleet Tub • 18 Inner Bags of 10.5 oz	
MBP8KG	Medium • Bulk Tub • 17.6 lbs	

PREMA CANADA  
FEATURED PRODUCTS



GAITHER BEAD BAZOOKAS



NEW!

Gaither  
PROFESSIONAL EQUIPMENT

**GT-BB14L3**  
14L Bead Bazooka with 3" Rapid Air Release Valve (RAR).  
This model will fit nicely between the current GT-BB10L2 and  
GT-GB38L Bead Seater options • For use on Commercial  
OTR and AG tires • Aluminum body for easy handling and an  
all new 3" Rapid Air Release (RAR) Valve • 115 PSI / 8 bar  
pressure • 3-way Control Cluster • Anti-corrosion Interior Tank  
Coating • Trigger Release • 3" Recoil-reducing Barrel • Weight:  
14.5 lbs • 1 year warranty

Watch our  
Unboxing Video!



The BEAD BAZOOKA® utilizes an upgraded version of the trigger-operated rapid air release (RAR) valve technology found in the original BEAD BAZOOKA® models • The extra power it delivers allows it to be smaller and lighter while still allowing the user to seat even the most stubborn tire beads • Half the size twice the power • Serviceable/Replaceable 2" RAR valve • Utilizes ultra-compact design • Anti-corrosion interior tank coating



GT-BB3L2



GT-BB6L2



GT-BB10L2

NEW!

SAFETY LUG LOCK®

Safety Lug Lock® is a  
wheel retainer, not just a  
wheel nut indicator.

This simple design  
reduces the risk of wheel  
loss by securing adjacent  
wheel nuts together and  
minimizing their ability to  
rotate.

Wheel nuts can be  
torque checked without  
removing the Safety Lug  
Lock®.



Code	# of Studs	Spacing	Nut Size	Price
ZTY-ZCH0B-33	10 Studs	3-1/2"	33 mm	
ZTY-ZTH0B-32	10 Studs	4-1/8"	32 mm	
ZTY-ZTH0B-33	10 Studs	4-1/8"	33 mm	
ZTY-ZVH0B-22	6 & 8 Studs	2-1/2"	22.2 mm	

Other sizes available



**ZTY-Z0001**  
Zafety Lug Lock® Deluxe  
Installation and Removal Tool •  
8.75" long



Find your local distributor at [www.premacanada.ca](http://www.premacanada.ca)  
1-800-268-6311



Find your local distributor at [www.premacanada.ca](http://www.premacanada.ca)  
1-800-268-6311





PREMA COMBI REPAIRS

Prema Combi Repair Units for crown injuries • Use when the angle of the injury is less than 25° • Prepare the injury using the appropriate Prema Carbide Cutter — PCC-2 For 1/4" or PCC-3 for 5/16"

PREMA COMBI 2  
For 1/4" Injuries

Code	Quantity	Price
PC-2	15 Units per Box	
PC-2J	40 Units per Box	



PREMA COMBI 3  
For 5/16" Injuries

Code	Quantity	Price
PC-3	10 Units per Box	
PC-3J	20 Units per Box	



QUICK CHANGE ADAPTERS



**SLP-9211**  
1-7/8" x 3/8" - 24 Threaded Quick Change Adapter with Washer & Nut • Black hardened

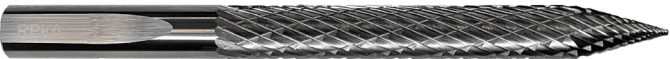


**SLP-9215**  
1/4" Quick Change Adaptor • Black Hardened • Compatible Cutter PCC-2 or CC-4.5 or CC-6



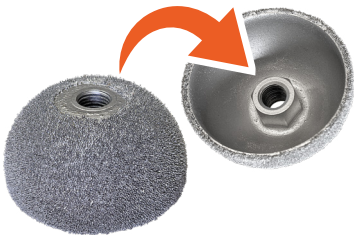
**SLP-9216**  
5/16" Quick Change Adaptor • Black Hardened • Compatible Cutter PCC-3 or CC-8

PREMA CARBIDE CUTTERS



Code	Carbide Length	Injury Size	Price
PCC-2	Regular	1/4" (6.35 mm)	
PCC-3	Regular	5/16" (7.938 mm)	

BUFFING WHEEL



**RH100-S**  
Flared Contour Buffing Wheel with 3/8"-24 Inner Nut • 2" x 3/4"

TIRE REPAIR CHEMICALS



**PPC-16**  
Prema Pre-Buff Cleaner • Removes contaminants (silicone and mold lubricants) from the innerliner of the tire prior to buffing • 16 oz



**PFC-8**  
Prema Ultra Fast Dry Vulcanizing Cement • Brush Top Can • 8 oz



**PLOS-16**  
Prema Innerliner Overbuff Sealant • Designed to restore air retention qualities to the buffed innerliner around the repair after installations • 16 oz



**PBS-32**  
Prema Bead Sealer provides a seal between the bead area of the tire and rim • Extremely thick / Will not drip • Flammable • 32 oz



**777**  
Premier Performance Bead Sealer is designed to prevent stubborn bead seepage once applied to rim, after it is remounted • Flammable • 32 oz

LUBRICANTS



REMA CONCENTRATED LIQUID  
TIRE LUBRICANT

**81511**  
1 Gallon



**81515**  
5 Gallons

BEAD KEEPER



**GT-12894C**  
Polymer Coated Steel Truck Bead Keeper • Protects aluminum wheels from being scratched while it locks onto the flange of the wheel and holds the tire bead in place • Eliminates standing on the tire and/or chasing the bead around the wheel

BRASS CLAMP-IN TRUCK VALVES - 570 Series



**500**

Code

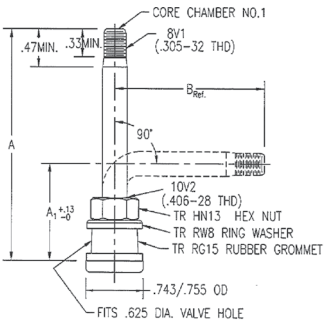


**500-23**



**501**

Description



- NOTES:
1. Valve Core: TR C1
  2. Valve Cap: TR VC2, VC3
  3. Recommended Nut Torque at Installation: 35-55 in-lbs

		TR #	Rim Hole	A	Price
<b>A-500-10</b>	Premier Performance Tubeless Truck Valve • Brass • Pack of 10	500	.625"	2"	
<b>A-50023</b>	Premier Performance Tubeless Truck Valve • Brass • 23° Bend	500-23	.625"	2"	
<b>A-501-100</b>	Premier Performance Truck and Bus Tubeless Truck Valve • Brass • Pack of 100	501	.625"	1.5"	

METAL VALVE CAPS



**A-VC3-100**  
Premier Performance Metal Dome Shaped Valve Cap • TR # VC-3 • Qty 100

LARGE BORE CHUCKS, ADAPTERS & TOOLS



**EX-4660-A**  
Large Bore Clip-On Air Chuck • Securely locks onto the valve when the clip is pushed forward • 1/4" Female NPT • Closed



**8914L**  
Large Bore Long Handle Lock-On Air Chuck • Chuck locks on valve threads • Inlet 1/4" F-NPT Straight Push-On Style • 5-1/8" Length



**A-AD1**  
Inside Large Bore to Standard Bore Adapter/Reducer • TR # AD-1



**A-675**  
Large Bore and Standard Bore Valve Core Removal Tool



**AME-95055**  
MAG-BEAR 25' Magnetic Retractable Barrier • This is a 25' Belt with printed CAUTION-DO NOT ENTER on a vibrant yellow band, ensuring ultimate safety • Magnetic Mounting System allows this product to be quickly and securely installed/uninstalled • Can be used in OTR Field Applications, Retread Shops, Commercial and Automotive Service Bays, etc.

